



SUMMER LEARNING UPDATE

CAMP SLPS 2022

Dr. Marion Smith Jr
Deputy Superintendent of Academics
September 13, 2022



ACADEMIC OFFICE UPDATES



- Summer Learning 2022
- Video
- Enrollment Trends
- Curricula Resources
- Professional Development
- Impact



SUMMER LEARNING



- ❑ Dates: June 6-30, 2022
- ❑ Purpose: Address Unfinished Learning, Enrichment and Credit Recovery
- ❑ 18 Lead School Sites
- ❑ 6 Days of Targeted Professional Learning
- ❑ What's Different About Summer Learning 2022
 - ❑ Consolidated Sites
 - ❑ 100% Digital Instructional Resources
 - ❑ New Partnerships: *Thrively & National Inventors Hall of Fame*
 - ❑ Off Site Field Experiences

SUMMER LEARNING



Summer Learning 2022 Video

<https://stlps->

[my.sharepoint.com/:v:/g/personal/yjuracsi8044_slps_org/ETMLIQgRpEZEesUMtl_BHXZoBmBiihXmFHTYvsBIURlbOWQ?e=C470FM](https://stlps-my.sharepoint.com/:v:/g/personal/yjuracsi8044_slps_org/ETMLIQgRpEZEesUMtl_BHXZoBmBiihXmFHTYvsBIURlbOWQ?e=C470FM)



ENROLLMENT TRENDS

ENROLLMENT	2020	2021	2022
District (PK – 12) (at the end of the year)	22,031	20,889	19,042
Summer School (PK – 12)	3,335	4,745	4,036
Summer School Percent of Total Enrollment	15%	23%	22%

CURRICULA RESOURCES



- ❑ **Thrively** - Social Emotional Learning, Social Studies, Science, Project-Based Learning platform
- ❑ **Savvas Success Maker** - English Language Arts
- ❑ **Renaissance Freckle Math-** Mathematics
- ❑ **National Inventors Hall of Fame** - Science, Technology, Engineering, Arts and Math (STEAM) Enrichment
- ❑ **Field Experiences-** Zoo, Art Museum, City Museum, & Grants Farm
- ❑ **Visual & Performing Arts** - Springboard / Wolftrap Partnership



PROFESSIONAL DEVELOPMENT



Professional Development Details

Site Leaders

Site Leader PD will consist of an introduction and review of all digital resources or credit recovery, and a Summer Site Leader Handbook, currently in development by district Network Superintendents. The handbook will include the essential information site leaders will need to know for leading the summer program.

The Categories and organization of the resources are:

In Case of Emergency Safety/Prevention/Response COVID Protocols Staff and Schedules Staff Responsibilities Staff Procedures School Procedures Curriculum & Instruction Assessment Field Trips Incentives

Educators

Educator PD will be differentiated based on their grade level of service. All teachers and support staff serving scholars grades Pre-K- 8 will receive training on best practices for summer engagement with the following digital programs:

- Success Maker (ELA)
- Renaissance Freckle (Math)
- Thrively (SEL, Science, Social Studies, PBL)

Teachers serving scholars in our gifted enrichment program will receive PD from the National Inventors Hall of Fame to support engagement in summer Project Based Learning Programming.

Teachers serving in Credit Recovery will engage in an overview of the Innovative Credit Recovery Program, including how to access and grade content area credit recovery kits.

Specialty Staff

Counsellors and Social Workers will participate in the Thrively PD sessions with a focus on the Social and Emotional components of the program

Nurses will engage in PD sessions on the scheduled dates in June.

Any staff, not participating directly in a PD session at any time during the June dates, with the exception of school secretaries, will be expected to contact scholars and scholar families to remind them of their Camp SLPS invitation and start date.

SCHEDULE

May 5th - (Savvas Su
May 12th - (Thrively)
May 19th - (Renaissan
(National Inve
June 1st - District W
June 2nd - District V
June 3rd - Classroom

*PK-8 Grade Staff Only
** Gifted Staff Only



"Education is the most powerful weapon which you can use to change the world."

-Nelson Mandela

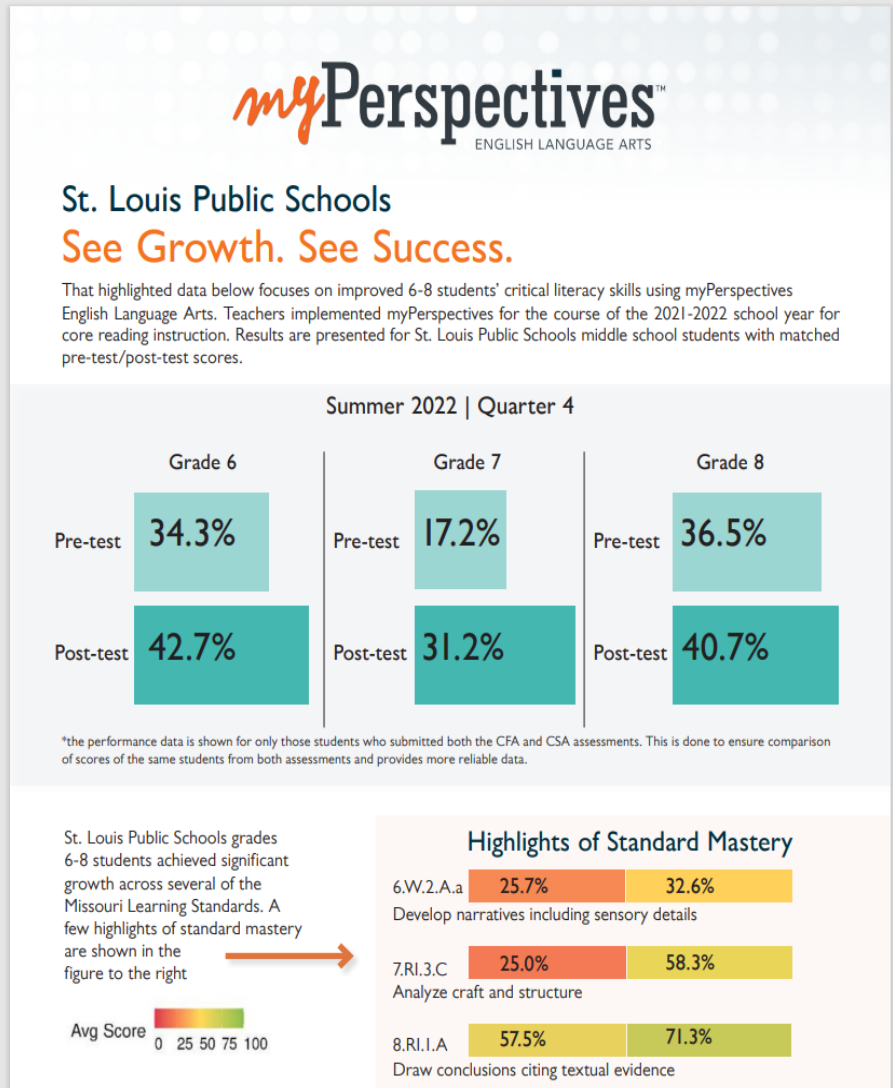


EVIDENCE OF IMPACT

- ❑ Credits Recovered: 908.5
- ❑ Additional Graduates: 8
- ❑ PK-8 Literacy Spotlight (pre/post test proficiency growth):
 - ❑ All grades K-8: Minimum of 4% growth
 - ❑ Grade 2: 9% growth
 - ❑ Grade 3: 9% growth
 - ❑ Grade 7: 14% growth



LITERACY DATA



QUESTIONS

